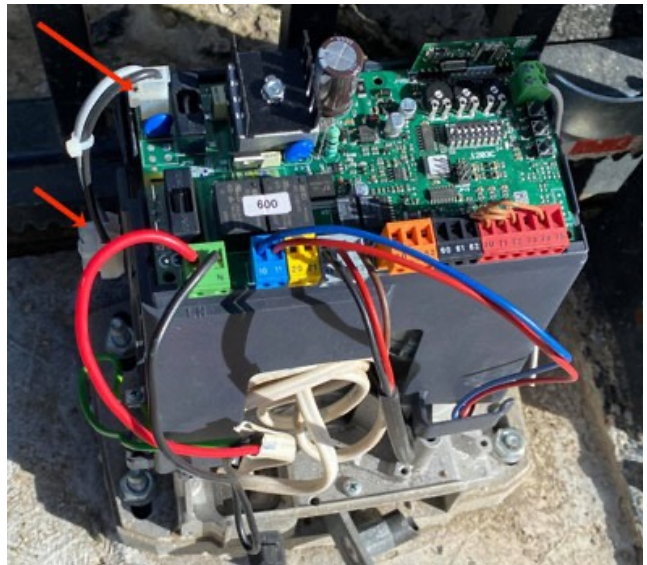


Step 1

Remove and discard these (red arrows)



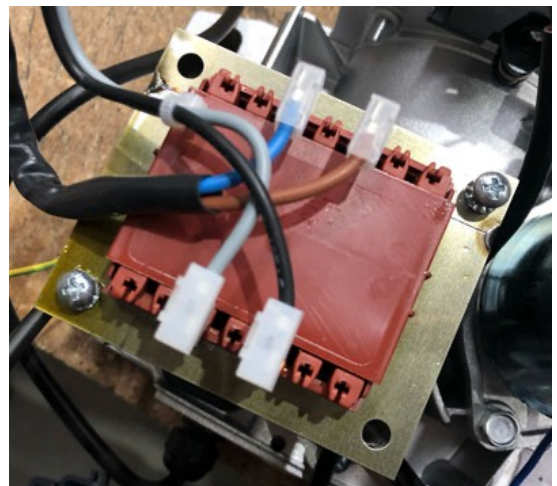
Step 2

Unscrew the control board stand and where the white wire is, you should see the place where transformer sits (in the photo below). Put the 2 black tubes in place like the photo below.



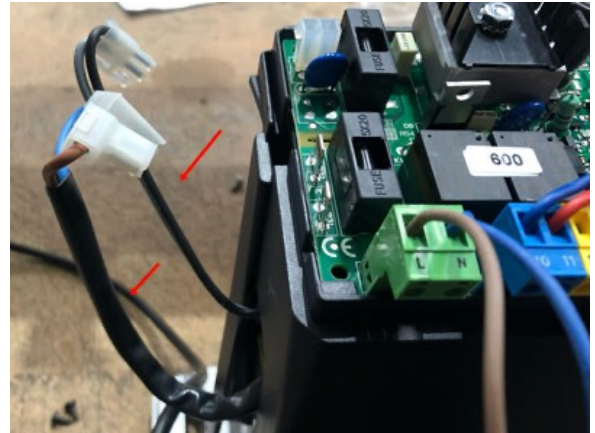
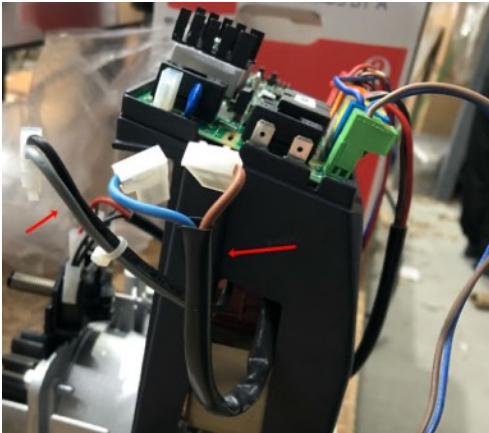
Step 3

Place the transformer in place. The BFT labelling will be upside down. After that, screw the transformer in the place where you place the black tubes with the provided screws.



Step 4

Screw back the control board stand and you should have 2 sets of wires coming out from the side.



Step 5

Connect the wires like the photo below.

