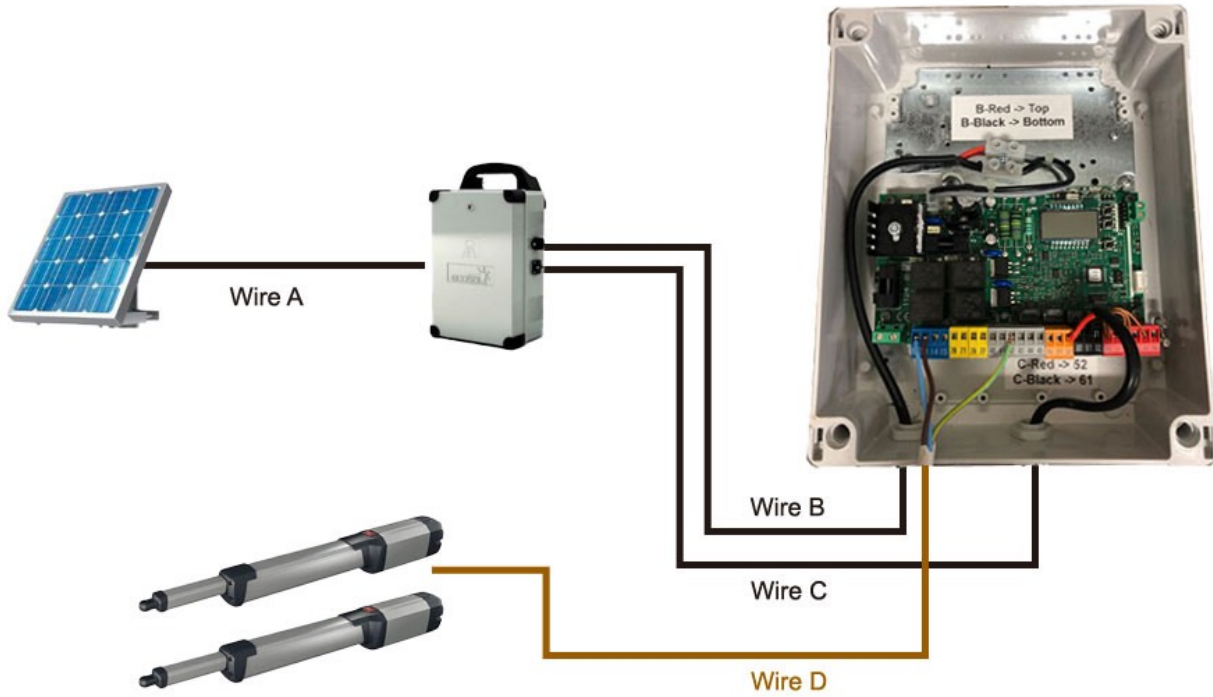


BFT Double Kustos Solar Configuration

Connect all the wires:



Wire A goes from the Solar Panel to the Ecosol Box.

Wire B & C go from the Ecosol Box to the Thalia Control Box.

- Red Wire in B goes to the top terminal.
- Black Wire in B goes to the bottom terminal.

- Red Wire in C goes to Terminal 52.
- Black Wire in C goes to Terminal 61.

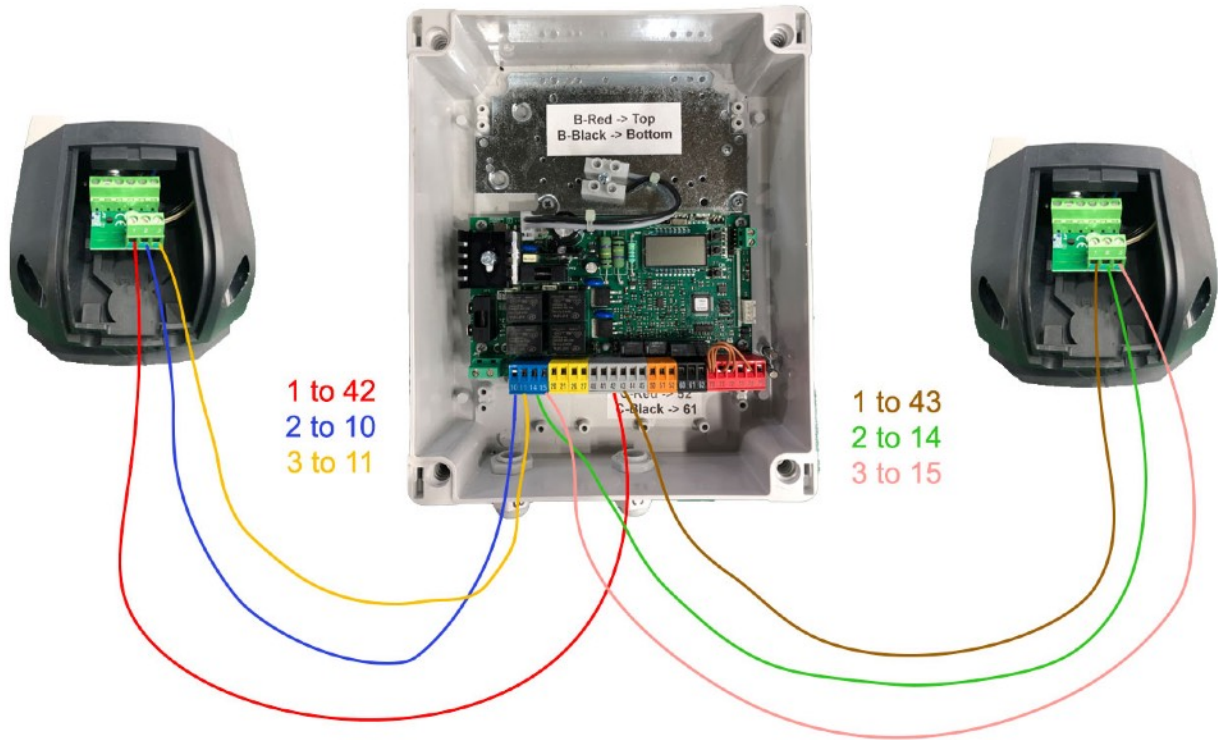
Wire D goes from the Thalia Control Box to the 2 Kustos Motors.

Note: These terminals are removable. Gently pull them out when you are wiring.



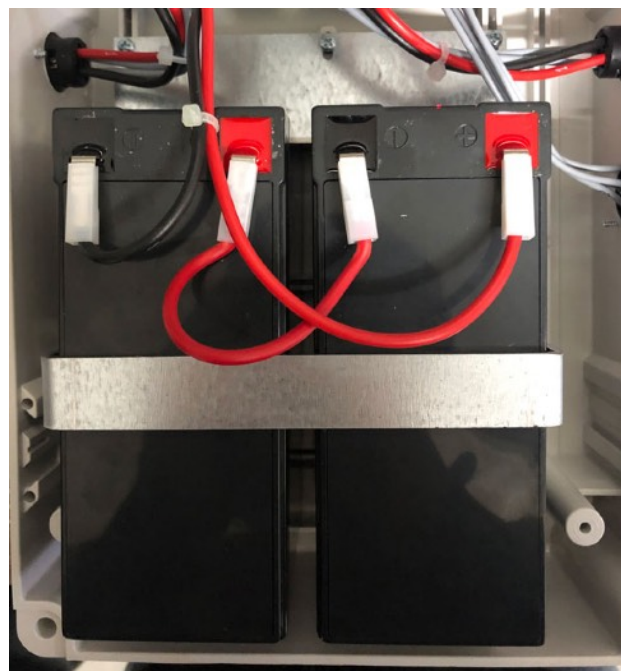
Wire the Motors to the Control Box:

Wire D provided is a 7-core wire. Only 3 cores per motor are needed for this configuration.



Power the Batteries:

Connect the red and black wires just like the photo.



Place the jumper:

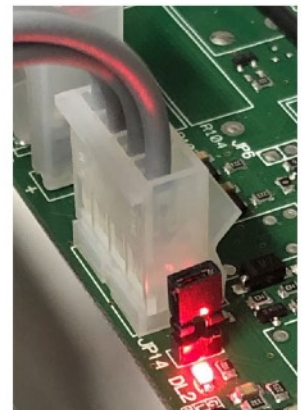
To let the power flow from the Ecosol Box to the Control Box, electric jumper needs to be in place.



This is where to place the electric jumper



Before placing the jumper



After placing the jumper

Programme the motors:

Follow the guide in the video from minute 3.15

Click the link if you are reading from an electronic copy or scan the QR code if you are reading from a paper version.

https://www.youtube.com/watch?v=xVbE_9pki60



Remove the jumper:

Remove the jumper from the Ecosol Box. This is done to only allow power to go to the Control Box when you press your remote to preserve battery life.