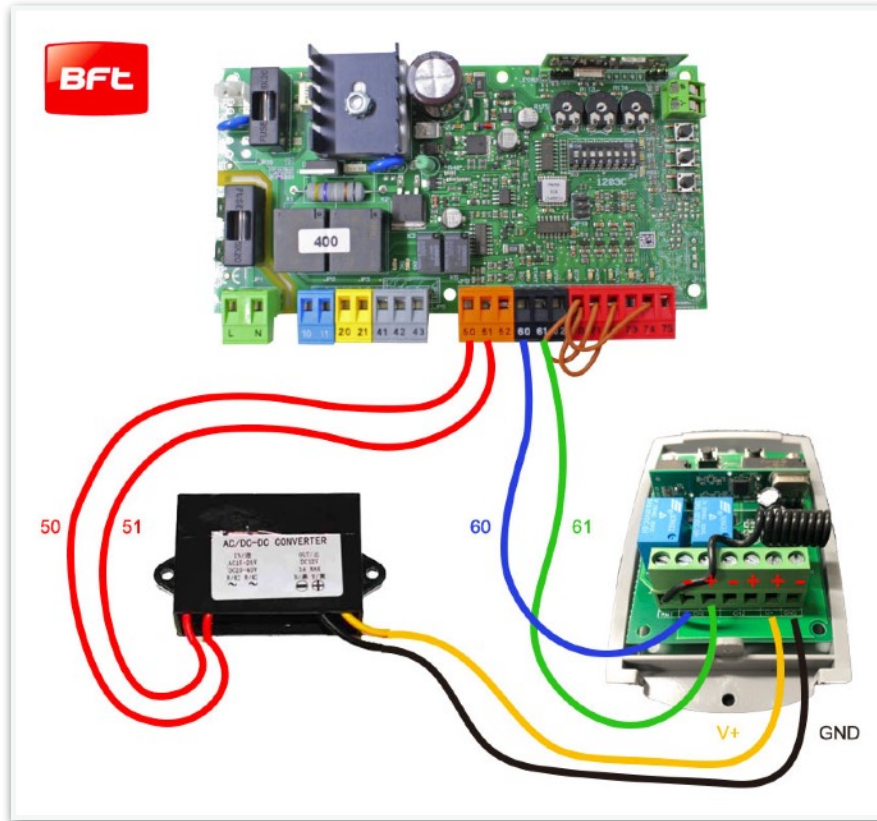


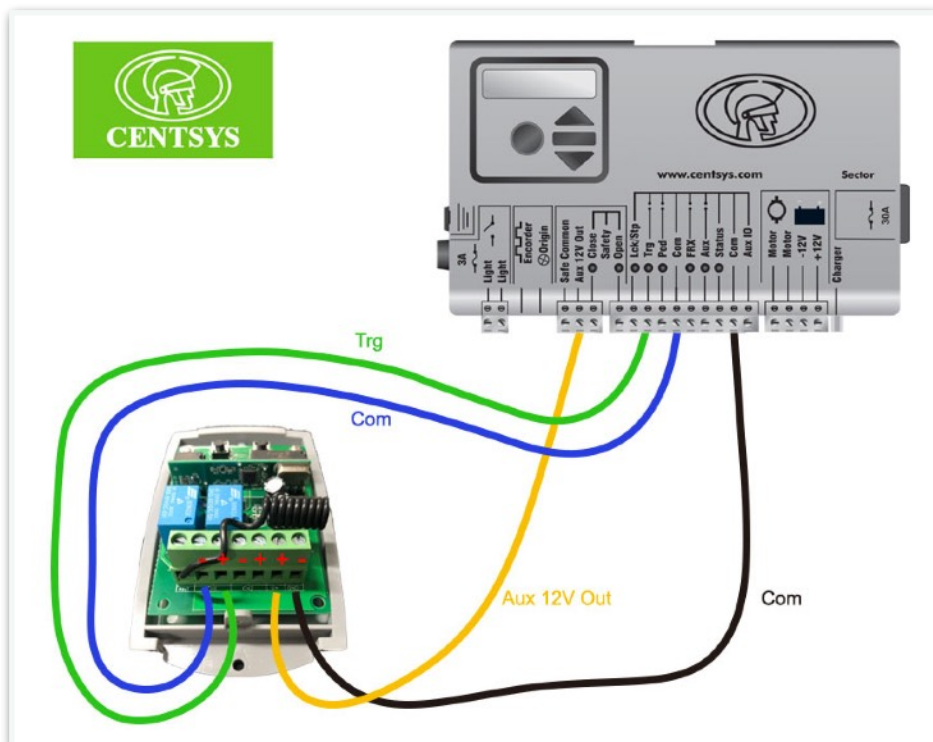
## Heavy Duty Wireless Keypad - ELKP010

### Setting up hardware:

For BFT Motors, AC/DC to DC Converter (FK784) is required.



For Centsys Motors, the receiver can be wired directly to the control board.



Note:

If you wire your motor to CH1 on the receiver as shown in the diagrams, your password has to be followed by the left arrow key on the keypad.

If you wire your motor to CH2, then your password has to be followed by the right arrow key.



### Changing password:

Default password for CH1 is **11**

If you wire your motor to CH1:

1. Press and hold 0
2. While holding down 0, press ◀
3. You will hear a long beep
4. Key in your original password then press ◀
5. You will NOT hear any beep
6. Key in your new password then press ◀
7. Key in your new password for the second time then press ◀
8. You will hear a long beep
9. Wait for the red light to go off

Default password for CH2 is **22**

If you wire your motor to CH2:

1. Press and hold 0
2. While holding down 0, press ▶
3. You will hear a long beep
4. Key in your original password then press ▶
5. You will NOT hear any beep
6. Key in your new password then press ▶
7. Key in your new password for the second time then press ▶
8. You will hear a long beep
9. Wait for the red light to go off

Pairing with keypad:

Press the left button if you wire your motor to CH1 and the right button if you wire your motor to CH2.

The red LED light will start blinking.

Key in your password and press LEFT arrow for CH1 and RIGHT arrow for CH2.

The red LED will turn solid when pairing is complete.

Pairing with remote control:

Press the left button if you wire your motor to CH1 and the right button if you wire your motor to CH2.

The red LED light will start blinking.

Press the desired button on your remote.

The red LED will turn solid when pairing is complete.

